

SLIDERBOX® Floor Box

Adjustable single gang floor box solution

Allied Moulded is expanding its line of floor box assemblies to include the new SLIDERBOX® floor box with flip lid covers. The new boxes are designed with Allied Moulded's patented SLIDERBOX® feature, and can be adjusted and installed in the "up" position to aid in easier installation of flooring material.

The new floor boxes are available in 3 cover finishes; brass, dark bronze, and nickel. The boxes are sold as a complete assembly kit and ready for installation.



FEATURES & BENEFITS

- Designed for use in raised wood floor construction and multiple floor substrate materials. This allows for quick and easy floor installation.
- No need to remove or relocate mounting screws to reposition the box. Simply loosen the screws and slide the box up or down.
- Three cover options; brass, dark bronze, or nickel
- Flip lid cover seals water tight and allows assembly to meet UL 514C scrub-water exclusion test
- Decorator type Tamper Resistant (TR) receptacle; 15 amp 125 volt with ground (NEMA config. 5-15R)
- Provisions for cable entry through molded-in Speed Klamps™ or 1/2" bottom knockouts
- Substrate thickness of 1-9/16" when utilizing positioning tabs. *Max floor substrate of 2"

U.S. Patents

#7,855,338 – #6,365,831



Scan QR code to learn more about our new floor box products!

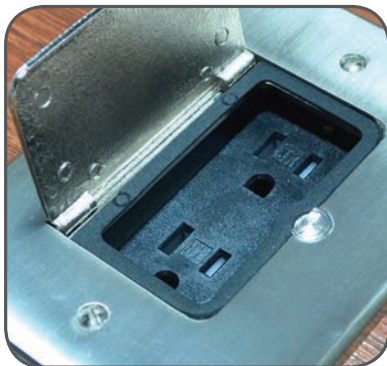
CONTACT INFORMATION

Allied Moulded Products, Inc.
222 North Union Street
Bryan, OH 43506 USA

Phone: 1-800-722-2679

Fax: 1-800-237-7269

Email: sales@alliedmoulded.com



Convenient flip-lid design available in three cover finish options, along with a decorator style device.



*Additional (max) substrate thickness is achieved when the slider plate is down and the box is installed at its highest position on the floor joist.



Patented slider plate holds screws in ready position, allowing for easy one-person installation.



**ALLIED
MOULDED
PRODUCTS, Inc.**



www.alliedmoulded.com

Quick & Simple Installation



1 *Find and install floor box on solid floor joist; mount with slider plate in the "up" position



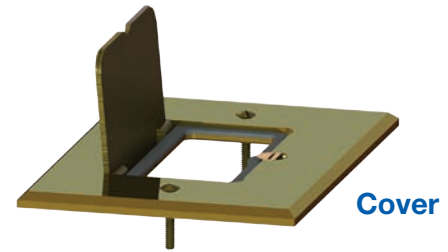
2 Move floor box in highest position by loosening slider plate screws, install sub floor around raised box



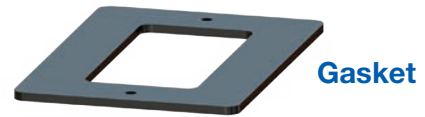
3 Install desired floor material around the raised floor box. The raised box allows for easier installation by contractors



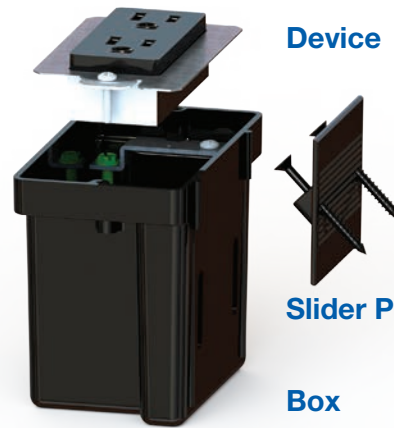
4 Adjust box height to achieve a flush position; wire the included device and install the gasket and cover



Cover



Gasket



Device

Slider Plate

Box

NEW! SLIDERBOX® Floor Box Options



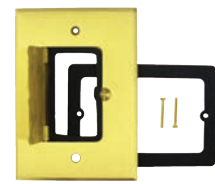
SBFB-1



SBFB-1N



SBFB-1DB



SBFB-1CVR

Cu. In Volume	Catalog Number	Cover Finish	Cover Type	Device	LV Provision	UPC# 85339	Std. Pkg. Qty.	Std. Wt. (lb.)
24.0	SBFB-1	Brass	Flip Lid	Decorator	No	97528	6	8
24.0	SBFB-1N	Nickel	Flip Lid	Decorator	No	97529	6	8
24.0	SBFB-1DB	Dark Bronze	Flip Lid	Decorator	No	97530	6	8

* Additional floor box assemblies available. Visit our website at www.alliedmoulded.com for more information!

Replacement cover options include SBFB-1CVR (Brass), SBFB-1NCVR (Nickel), and SBFB-1DBCVR(Dark Bronze)

