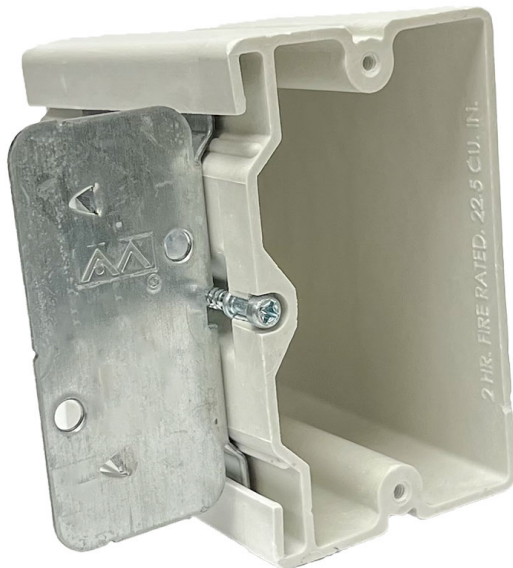




ALLIED
MOULDED
PRODUCTS, Inc.

419-636-4217
222 N. Union St.
Bryan, OH 43506



1099-AB Single gang fiberglass adjustable electrical box for use with nonmetallic sheathed cable.

Carton Quantity: 50

Carton Weight: 29

Box Type: Wall - Switch/Receptacle

Box Features: Adjustable box (SLIDERBOX®)

Installation Type: New Work

Height: 3.83 in

Width: 3.375 in

Depth: 3.563 in

Volume: 22.5 cu in

Number of Gangs: 1

Product Info

Brand: SLIDERBOX

UPC: 85339988387

Carton Weight: 29 lbs

Carton Length: 21 in

Carton Width: 9 in

Carton Height: 12.5 in

Country of Origin: United States of America

Patents: Patent Pending

Material: Fiberglass reinforced polyester

Additional Materials: Galvanized steel brackets and plated carbon steel fasteners

Features:

- fiberglassBOX® material, so no putty pad is needed when following the Uniform Building Code (3" minimum distance between boxes).
- Sound rated up to STC (Sound Transmission Class) rating of 54
- 0"-2" of adjustability to fit most wall finishes and arrives preset for 1/2" standard drywall applications.
- 6-32 UNC tapped holes for easy device mounting
- Corrosion resistant metal bracket for a solid hold to a wood or metal wall stud.
- One screw design for easy adjustability.
- Knockout for a 1/2" NM connector

Application:

New work residential construction 2 HR fire resistive walls

Standards:

ANSI / UL 514C: [File No. E30594](#)



LISTED

Fire Classification:

Fire Test of Building Construction Materials

ANSI / UL 263: [File No. CEYY.R9379](#) (Category / File No.)

Note: Products must also be certified to: ANSI / UL 514C

Fire Resistance Classification in Wall Assemblies 2-Hours or less

Shall be separated by a horizontal distance of not less than 3 inches

Note: For more details please refer to the UL fire resistive directory and Allied Moulded's CEYY.9379 (Outlet boxes and fittings classified for fire resistance)
