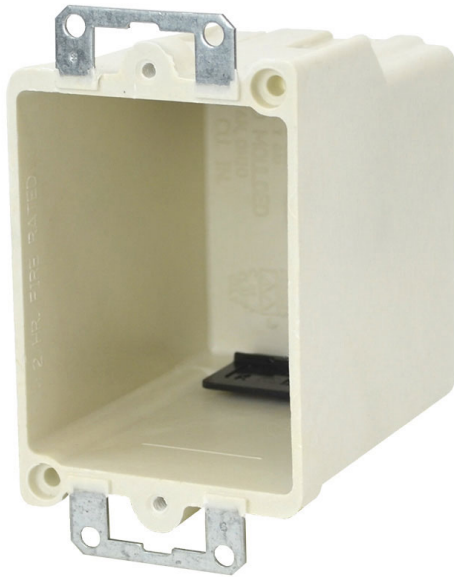




**ALLIED
MOULDED
PRODUCTS, Inc.**

**419-636-4217
222 N. Union St.
Bryan, OH 43506**



Product Info

Brand: fiberglassBOX

UPC: 85339760030

UNSPSC: 39121308

Carton Weight: 32 lbs

Carton Length: 21 in

Carton Width: 13 in

Carton Height: 14 in

Country of Origin: United States of America

Color: Off white

Material: Fiberglass reinforced polyester

Additional Materials: Galvanized steel brackets and plated carbon steel fasteners, Polyvinyl chloride clamps

9368-EK

Single gang electrical box for use with nonmetallic sheathed cable

Carton Quantity: 100

Closure Type:

Mounting Description: Metal ears

Box Type: Wall - Switch/Receptacle

Box Features: Metal ears, Speed "K" nonmetallic clamps

Installation Type: Old Work

Height: 3-1/4 in

Width: 2-3/8 in

Depth: 3-3/16 in

Volume: 18.0 cu in

Number of Gangs: 1

Features:

Machine tapped device holes, rigid hard box construction, no distortion with high temperatures, shatter resistant with low temperatures, Speed "K" Clamps factory installed

Application:

Old work residential construction 2 HR fire resistive walls and ceilings

Standards:

ANSI / UL 514C: [File No. E30594](#)



LISTED

Fire Classification:

Fire Test of Building Construction Materials

ANSI / UL 263: [File No. CEYY.R9379](#) (Category / File No.)

Note: Products must also be certified to: ANSI / UL 514C

Fire Resistance Classification in Wall Assemblies 2-Hours or less

Shall be separated by a horizontal distance of not less than 3 inches

Fire Resistance Classification in Floor-Ceiling Assemblies 2-Hours or Less

Distance between boxes in adjacent cavities may be reduced to 5 1/2 inches

Note: For more details please refer to the UL fire resistive

*directory and Allied Moulded's CEYY.9379 (Outlet boxes
and fittings classified for fire resistance)*
