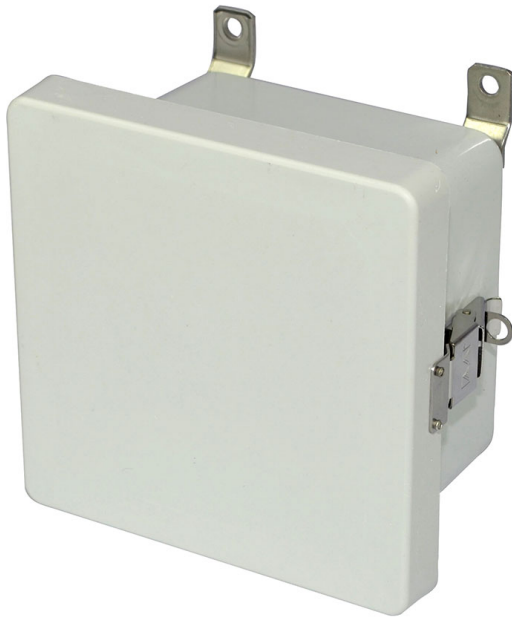




**ALLIED
MOULDED
PRODUCTS, Inc.**

**+91.80.67926666
NO.199 & 242, Road No. 8
Bommasandra, Jigani Link Road
Bangalore, Karnataka**



AM664IL

AM Series fiberglass wall mount enclosure assembly with hinged cover and stainless steel snap latch

Enclosure Type: JIC Size

Cover Type: Opaque

Closure Type: metal snap latch

Mounting Description: Stainless steel feet fastened to back side brass inserts

Box Features:

Installation Type:

Height: 155 mm

Width: 155 mm

Depth: 106 mm

Usable Depth: 96 mm

Volume: 156 cu mm

Product Info

Brand: AM Series

Carton Quantity: 1

Carton Weight: 0.748 kg

Country of Origin: India

Color: Gray (RAL 7035)

Material: Fiberglass Reinforced Polyester - compression molded SMC box and cover

Additional Materials: 304 stainless steel external hardware (hinges/latches/fasteners), 304 Stainless Steel Mounting brackets, 304 Stainless Steel internal hardware, Brass inserts, Neoprene gasket

Features:

Non-corrosive, non- conductive, UV protected, Flameretardent, Impact resistant, Chemical Resistant, Leight Weight with lower installation cost, Negligible maintenance cost, easy to modify and Loger life cycle compare to Steel/Polycarbonate. Rigid design with Back panel inserts plus Stainless Steel wall mounting brackets and neoprene gasket encased in a continous channel on the cover.

Application:

Enclose and protect electrical and electronic controls, instruments or components for indoor and outdoor applications. Especially well suited for extreme temperature and corrosive environments.

Standards:

IEC-62208 , IEC-60695-2-11:2000, IEC-60529:2013-08, IEC-60068-2-2:2007, IEC-62262-2002, UL-94 5VA, RoHS Compliant

