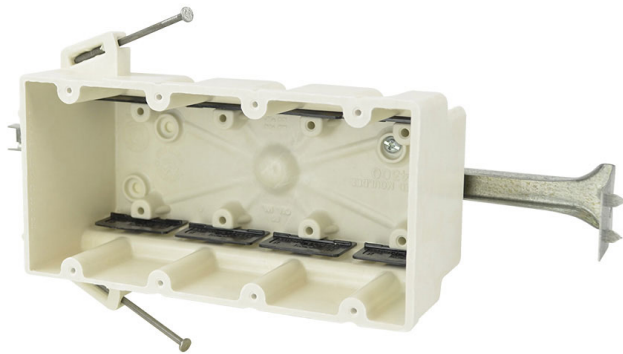




ALLIED
MOULDED
PRODUCTS, Inc.

419-636-4217
222 N. Union St.
Bryan, OH 43506



4300-NBK

Four gang electrical box for use with nonmetallic sheathed cable *Replacement for 4300-NB*

Carton Quantity: 18

Mounting Description: Angled mid nails with adjustable stabilizer bar

Box Type: Wall - Switch/Receptacle

Box Features: Adjustable stabilizing bar, Nails, Speed "K" nonmetallic clamps

Installation Type: New Work

Height: 3-3/4 in

Width: 7-1/2 in

Depth: 3 in

Volume: 60 cu in

Number of Gangs: 4

Product Info

Brand: fiberglassBOX

UPC: 85339162711

UNSPSC: 39121308

Carton Weight: 22 lbs

Carton Length: 17 in

Carton Width: 16 in

Carton Height: 16 in

Country of Origin: United States of America

Color: Off white

Material: Fiberglass reinforced polyester

Additional Materials: Carbon steel fasteners, Galvanized steel brackets and plated carbon steel fasteners, Polyvinyl chloride clamps

Features:

Machine tapped device holes, offset gauge marks, leveling ribs, rigid hard box construction, no distortion with high temperatures, shatter resistant with low temperatures, Speed "K" Clamps factory installed

Application:

New work residential construction 2 HR fire resistive walls

Standards:

ANSI / UL 514C: [File No. E30594](#)



LISTED

Fire Classification:

Fire Test of Building Construction Materials

ANSI / UL 263: [File No. CEYY.R9379](#) (Category / File No.)

Note: Products must also be certified to: ANSI / UL 514C

Fire Resistance Classification in Wall Assemblies 2-Hours or less

Shall be separated by a horizontal distance of not less than 24 inches

Note: For more details please refer to the UL fire resistive directory and Allied Moulded's CEYY.9379 (Outlet boxes and fittings classified for fire resistance)