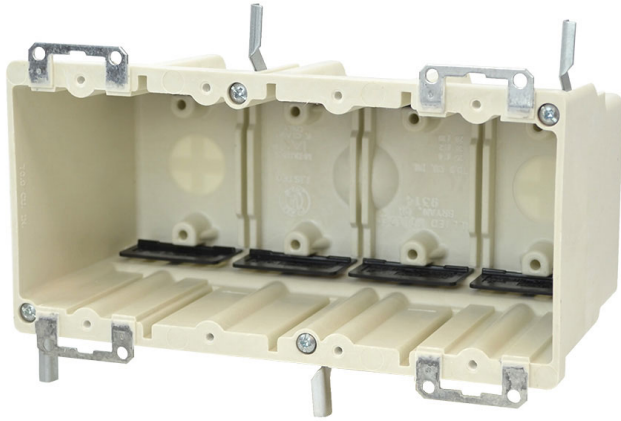




**ALLIED
MOULDED
PRODUCTS, Inc.**

**419-636-4217
222 N. Union St.
Bryan, OH 43506**



9314-EWK

Four gang electrical box for use with nonmetallic sheathed cable

Carton Quantity: 6

Mounting Description: Metal wing brackets/metal ears wall compression

Box Type: Wall - Switch/Receptacle

Box Features: Metal ears, Speed "K" nonmetallic clamps, Wing bracket

Installation Type: Old Work

Height: 3-3/4 in

Width: 7-11/16 in

Depth: 3-9/16 in

Volume: 70 cu in

Number of Gangs: 4

Product Info

Brand: fiberglassBOX

UPC: 85339318002

UNSPSC: 39121308

Carton Weight: 8 lbs

Carton Length: 14 in

Carton Width: 10 in

Carton Height: 9 in

Country of Origin: United States of America

Color: Off white

Material: Fiberglass reinforced polyester

Additional Materials: Galvanized steel brackets and plated carbon steel fasteners, Polyvinyl chloride clamps

Features:

Machine tapped device holes, slot provision for low voltage divider, rectangular exterior for easy cut-in, rigid hard box construction, no distortion with high temperatures, shatter resistant with low temperatures, Speed "K" Clamps factory installed

Application:

Old work residential construction 2 HR fire resistive walls

Standards:

ANSI / UL 514C: [File No. E30594](#)



LISTED

WARNING - PROP 65

[Click here for more information!](#)

Fire Classification:

Fire Test of Building Construction Materials

ANSI / UL 263: File No. CEYY.R9379 (Category / File No.)

Note: Products must also be certified to: ANSI / UL 514C

Fire Resistance Classification in Wall Assemblies 2-Hours or less

Shall be separated by a horizontal distance of not less

than 24 inches

Note: For more details please refer to the UL fire resistive directory and Allied Moulded's CEYY.9379 (Outlet boxes and fittings classified for fire resistance)
