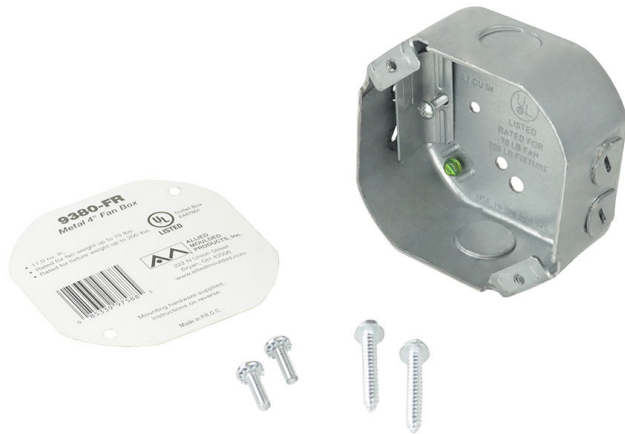




**ALLIED
MOULDED
PRODUCTS, Inc.**

**419-636-4217
222 N. Union St.
Bryan, OH 43506**



9380-FR

Octagonal steel fan/fixture support box for use with nonmetallic sheathed cable

Carton Quantity: 24

Mounting Description: Bottom mount

Box Type: Ceiling - Fan/Fixture

Installation Type: New Work

Width: 4 in

Depth: 1-3/4 in

Volume: 17 cu in

Fan Rating: 70lbs

Fixture Rating: 200lbs

Product Info

UPC: 85339975885

UNSPSC: 39121316

Carton Weight: 13 lbs

Carton Length: 21 in

Carton Width: 10 in

Carton Height: 11 in

Country of Origin: China

Color: Silver

Material: Galvanized steel

Additional Materials: Plated carbon steel clamp and fasteners

Box Diameter: 4

Features:

Machine tapped fixture holes, steel box construction, steel clamps factory installed

Application:

New work residential construction 2 HR fire resistive walls and ceilings (70 lbs. fan support and 200 lbs. fixture support)

Box Diameter: 4

Standards:

ANSI / UL 514A: [File No. E487601](#)



LISTED

Fire Classification:

Fire Test of Building Construction Materials - (Outlet Boxes and Fittings) Metallic Outlet Boxes (QCIT)

Use In Fire-Rated Assemblies

Certified metallic outlet and switch boxes with metallic or nonmetallic cover plates may be used in floor-ceiling and roof-ceiling assemblies with ratings not exceeding 2 h when these assemblies have gypsum wallboard membranes. The boxes are intended to be fastened to the joists with the openings in the wallboard facing cut so that the clearance between the boxes and the gypsum wallboard does not exceed 1/8 in. The boxes are intended to be installed so that the surface area of individual boxes

does not exceed 16 sq in, and the aggregate surface area of the boxes does not exceed 100 sq in per 100 sq ft of ceiling surface.
