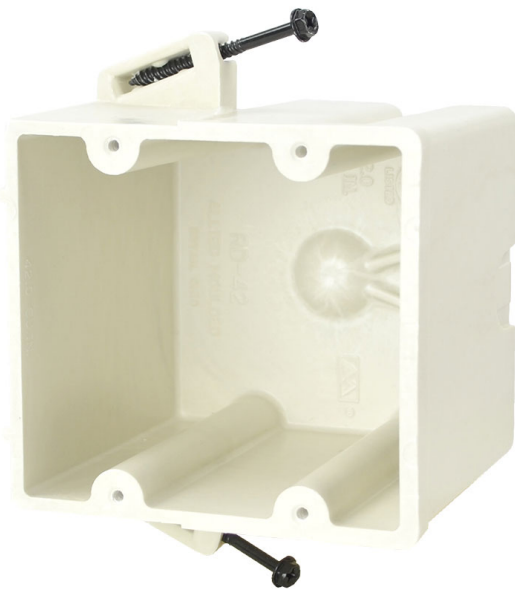




**ALLIED
MOULDED
PRODUCTS, Inc.**

**419-636-4217
222 N. Union St.
Bryan, OH 43506**



Product Info

Brand: fiberglassBOX

UPC: 85339129059

UNSPSC: 39121309

Carton Weight: 22 lbs

Carton Length: 22 in

Carton Width: 9 in

Carton Height: 13 in

Country of Origin: United States of America

Color: Off white

Material: Fiberglass reinforced polyester

Additional Materials: Carbon steel fasteners, Plated carbon steel clamp and fasteners

RD-42SS

Range/dryer/car charger electrical box for use with nonmetallic sheathed cable

Carton Quantity: 24

Mounting Description: Steel stud screws for use with non-load bearing studs 22 gauge or lighter

Box Type: Wall - Switch/Receptacle

Box Features: Screws

Installation Type: New Work

Height: 3-3/4 in

Width: 4 in

Depth: 3-13/16 in

Volume: 42 cu in

Features:

Machine tapped holes for 2-position device, internal metal clamp for easy wire adjustment, offset gauge marks, leveling ribs, rigid hard box construction, no distortion with high temperatures, shatter resistant with low temperatures

Application:

New work residential construction – steel or wood studs 2 HR fire resistive walls, UL approved for back-to-back installation

Standards:

ANSI / UL 514C: [File No. E30594](#)



LISTED

Fire Classification:

Fire Test of Building Construction Materials

ANSI / UL 263: File No. CEYY.R9379 (Category / File No.)

Note: Products must also be certified to: ANSI / UL 514C

Fire Resistance Classification in Wall Assemblies 2-Hours or less

Shall be separated by a horizontal distance of not less than 3 inches

Note: For more details please refer to the UL fire resistive directory and Allied Moulded's CEYY.9379 (Outlet boxes and fittings classified for fire resistance)