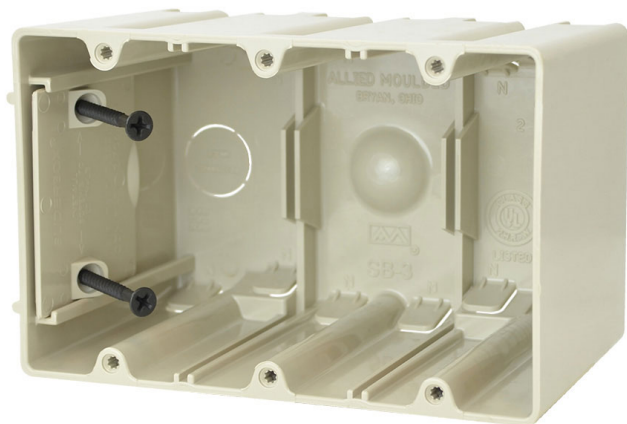




**ALLIED
MOULDED
PRODUCTS, Inc.**

**419-636-4217
222 N. Union St.
Bryan, OH 43506**



SB-3

Three gang adjustable electrical box for use with nonmetallic sheathed cable

Carton Quantity: 6

Mounting Description: 2 Screws

Box Type: Wall - Switch/Receptacle

Box Features: Adjustable box (SLIDERBOX®), Screws

Installation Type: New Work, Old Work

Height: 3-3/4 in

Width: 5-13/16 in

Depth: 3-9/16 in

Volume: 61 cu in

Number of Gangs: 3

Product Info

Brand: SLIDERBOX

UPC: 85339945024

UNSPSC: 39121308

Carton Weight: 3 lbs

Carton Length: 13 in

Carton Width: 12 in

Carton Height: 5 in

Country of Origin: United States of America

Color: Beige

Patents: U.S. Patent No. 7,855,338, U.S. Patent No. 6,365,831 B1

Material: Polycarbonate

Additional Materials: Carbon steel fasteners

Features:

Molded-in splined device holes, adjustable slider plate for additional wall substrate thickness, slot provision for low voltage divider, rectangular exterior for easy cut-in, leveling ribs, offset gauge marks

Application:

New and old work residential construction 2 HR fire resistive walls and ceilings

Standards:

ANSI / UL 514C: [File No. E30594](#)



LISTED

Fire Classification:

Fire Test of Building Construction Materials

ANSI / UL 263: [File No. CEYY.R9379](#) (Category / File No.)

Note: Products must also be certified to: ANSI / UL 514C

Fire Resistance Classification in Wall Assemblies 2-Hours or less

Shall be separated by a horizontal distance of not less than 24 inches

Note: For more details please refer to the UL fire resistive directory and Allied Moulded's CEYY.9379 (Outlet boxes and fittings classified for fire resistance)