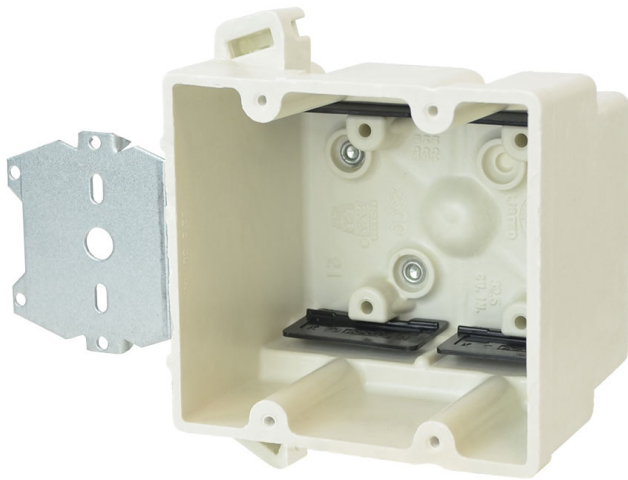




**ALLIED
MOULDED
PRODUCTS, Inc.**

**419-636-4217
222 N. Union St.
Bryan, OH 43506**



2300-Z2K

Two gang electrical box for use with nonmetallic sheathed cable

Carton Quantity: 48

Closure Type:

Mounting Description: Stud mount "Z" hanger bracket with 1/4" offset

Box Type: Wall - Switch/Receptacle

Box Features: Speed "K" nonmetallic clamps, "Z" hanger(s)

Installation Type: New Work

Height: 3-3/4 in

Width: 4 in

Depth: 3 in

Volume: 32.5 cu in

Number of Gangs: 2

Product Info

Brand: fiberglassBOX

UPC: 85339124016

UNSPSC: 39121308

Carton Weight: 35 lbs

Carton Length: 16 in

Carton Width: 15 in

Carton Height: 17 in

Country of Origin: United States of America

Color: Off white

Material: Fiberglass reinforced polyester

Additional Materials: Galvanized steel brackets and plated carbon steel fasteners, Polyvinyl chloride clamps

Features:

Machine tapped device holes, leveling ribs, rigid hard box construction, no distortion with high temperatures, shatter resistant with low temperatures, Speed "K" Clamps factory installed

Application:

New work residential construction stud face mounted 2 HR fire resistive walls

Standards:

ANSI / UL 514C: [File No. E30594](#)



LISTED

Fire Classification:

Fire Test of Building Construction Materials

ANSI / UL 263: [File No. CEYY.R9379](#) (Category / File No.)

Note: Products must also be certified to: ANSI / UL 514C

Fire Resistance Classification in Wall Assemblies 2-Hours or less

Shall be separated by a horizontal distance of not less than 3 inches

Note: For more details please refer to the UL fire resistive directory and Allied Moulded's CEYY.9379 (Outlet boxes and fittings classified for fire resistance)