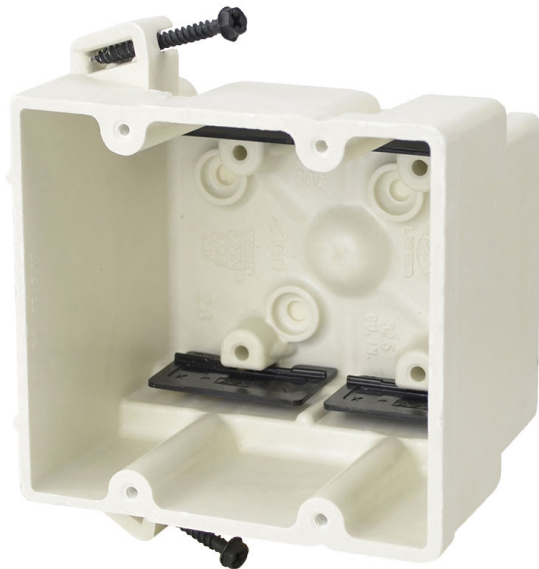




**ALLIED
MOULDED
PRODUCTS, Inc.**

**419-636-4217
222 N. Union St.
Bryan, OH 43506**



Product Info

Brand: fiberglassBOX

UPC: 85339130819

UNSPSC: 39121308

Carton Weight: 30 lbs

Carton Length: 16 in

Carton Width: 15 in

Carton Height: 17 in

Country of Origin: United States of America

Color: Off white

Material: Fiberglass reinforced polyester

Additional Materials: Carbon steel fasteners, Polyvinyl chloride clamps

2302-SSK

Two gang electrical box for use with nonmetallic sheathed cable *Replacement for 2302-SS*

Carton Quantity: 48

Mounting Description: Steel stud screws for use with non-load bearing studs 22 gauge or lighter

Box Type: Wall - Switch/Receptacle

Box Features: Screws, Speed "K" nonmetallic clamps

Installation Type: New Work

Height: 3-3/4 in

Width: 4 in

Depth: 3-7/16 in

Volume: 37 cu in

Number of Gangs: 2

Features:

Machine tapped device holes, slot provision for low voltage divider, offset gauge marks, leveling ribs, rigid hard box construction, no distortion with high temperatures, shatter resistant with low temperatures, Speed "K" Clamps factory installed

Application:

New work residential construction – steel or wood studs 2 HR fire resistive walls

Standards:

ANSI / UL 514C: [File No. E30594](#)



LISTED

Fire Classification:

Fire Test of Building Construction Materials

ANSI / UL 263: [File No. CEYY.R9379](#) (Category / File No.)

Note: Products must also be certified to: ANSI / UL 514C

Fire Resistance Classification in Wall Assemblies 2-Hours or less

Shall be separated by a horizontal distance of not less than 3 inches

Note: For more details please refer to the UL fire resistive directory and Allied Moulded's CEYY.9379 (Outlet boxes and fittings classified for fire resistance)