



HMI Cover Kit

Installation Instructions for HMI Cover Kit
AMHMI66, AMHMI86, AMHMI88, AMHMI108, AMHMI120,
AMHMI142, AMHMI164, AMHMI206

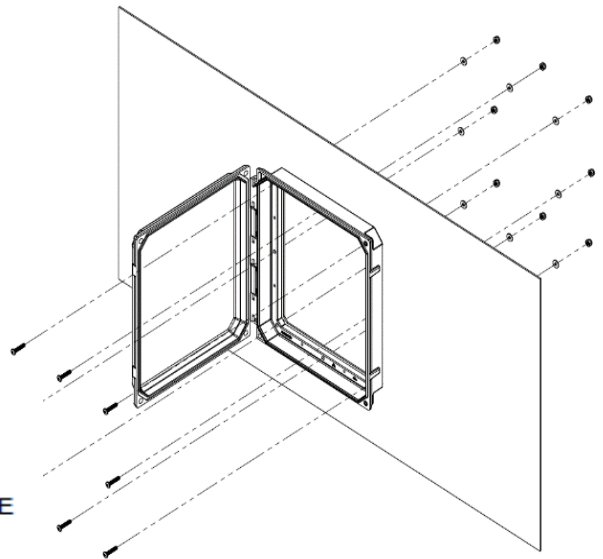
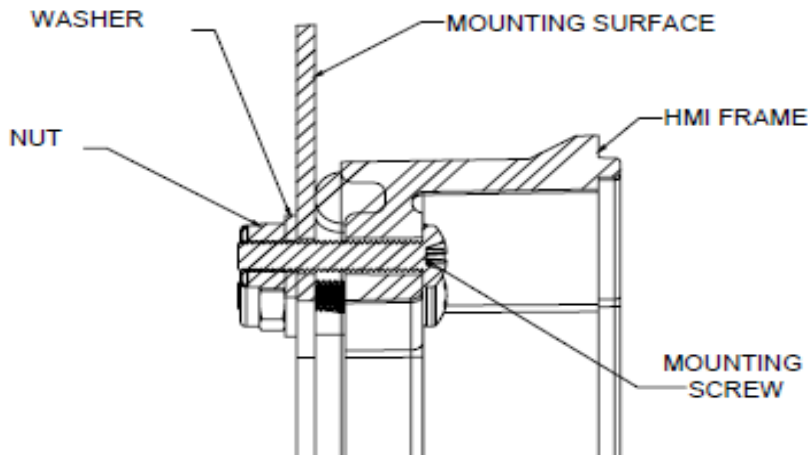
Instructions for Installing HMI Cover

1. Place frame on a flat smooth surface and mark hole locations and panel opening.
2. Drill or cut holes 7/32 or #2 (.220 Dia) and opening accordingly. (Prior to mounting clean surface and gasket of debris.)
3. Mount HMI Cover with supplied mounting hardware. Hardware applicable to mounting surface thickness of .059" - .250". Hardware torque specification 15 - 20 in -lbs.
4. Hardware kit includes:
 - Quantity (10). 10-32 X 1 Pan Head Machine Screw.
 - Quantity (10). Stainless Steel Washer Rivet.
 - Quantity (10). Nut 10-32 With Nylon Insert.

Note: Part includes padlock feature on latch that may be used to prevent unauthorized or unintentional opening of the latches.

PART NUMBER	NUMBER OF KITS	MAX PANEL CUTOUT SIZE (IN.)		NUMBER OF FASTENERS NEEDED
		H	W	
AMHMI66	1	4.47	4.69	8
AMHMI86	1	6.47	4.69	8
AMHMI88	1	6.47	6.69	8
AMHMI108	1	8.47	6.69	8
AMHMI120	1	10.47	8.69	8
AMHMI142	1	12.49	10.71	10
AMHMI164	1	14.49	12.71	10
AMHMI206	2	18.49	14.71	18

May include extra hardware depending on HMI frame size.



Allied Moulded Products, Inc.
222 North Union Street • Bryan, OH 43506
Phone: 1-800-722-2679 • Fax: 1-800-237-7269
www.alliedmoulded.com