

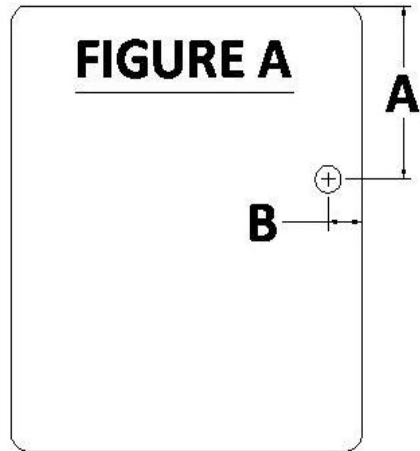
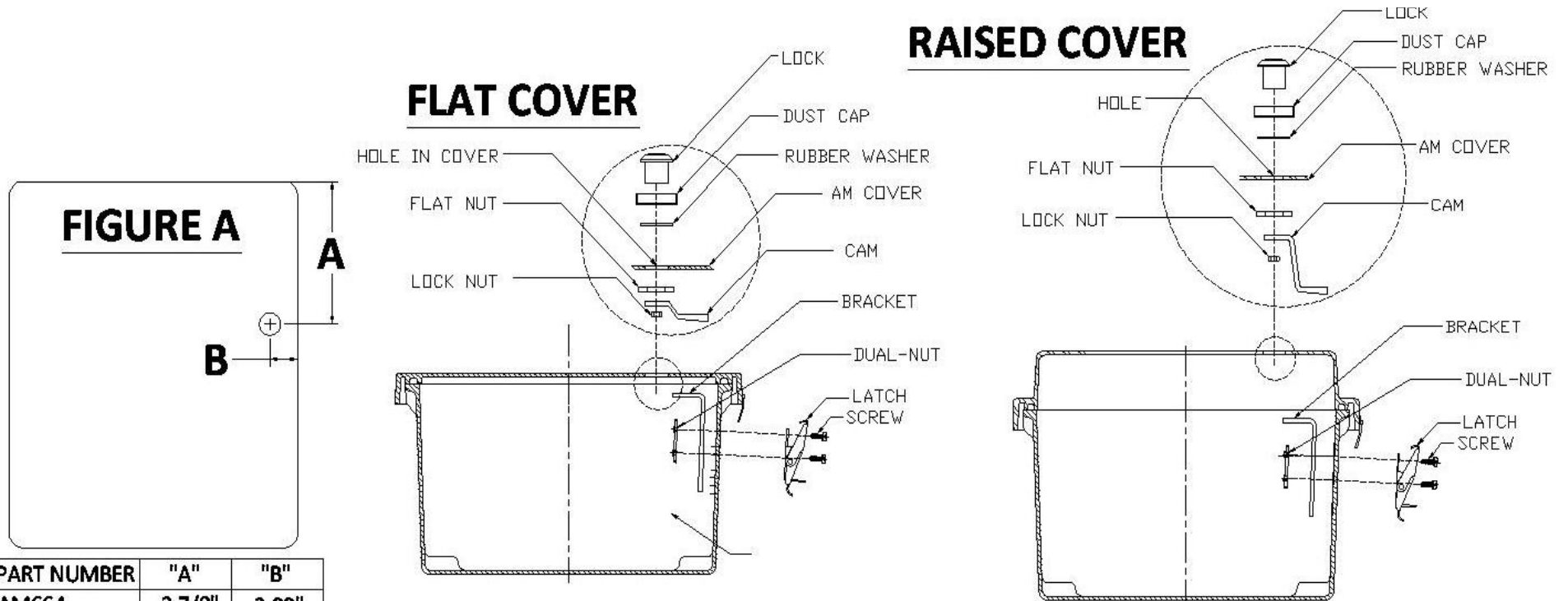
Keylock Assembly for AM and AMR Series Enclosures

Installation Instructions for Keylock Assembly
AMKEYLOCKFC, AMKEYLOCKRC



Allied Moulded Products, Inc.
222 North Union Street
Bryan, OH 43506
Phone: 1-800-722-2679 • FAX: 1-800-237-7269
www.alliedmoulded.com

1. Drill a 7/8" hole in cover using a hole saw according to the chart Figure A.
2. Remove the latch from the long side of the box by removing; acorn nuts, lock washers and screws; dual-nut and screws; or by drilling the rivets out with a #29 drill bit. If there are two latches, remove the top latch only. Insert the provided screws through the latch and box (using the same holes) then install the provided bracket and dual-nut.
3. Assemble the lock by placing the dust cap on followed by the rubber washer and then insert the lock into the hole you drilled in the cover. After the lock is in the hole, attach the flat nut to hold the lock in place (finger tighten at this step). Next, install the cam on the back of the lock by using the small lock nut to hold it on.
4. Close the box, insert the key and turn the lock. Make sure that when the key is turned into the lock position that the cam is under the bracket. Once you have verified that the lock is positioned properly, tighten the flat nut on the back of the lock assembly.



PART NUMBER	"A"	"B"
AM664	2 7/8"	3.00"
AM864	2 7/8"	3.00"
AM1084/1086	5 7/8"	3.00"
AM1206	2 7/8"	3.00"
AM1426	3 5/8"	3.00"
AM1648	4 11/16"	3.00"
AM1868	6 3/4"	3.00"
AM2068	5 17/32"	3.00"
AM2420	4 13/16"	3.00"
AM2424	4 13/16"	3.00"
AM3024	5 13/16"	3.00"

ASSEMBLED VIEWS

