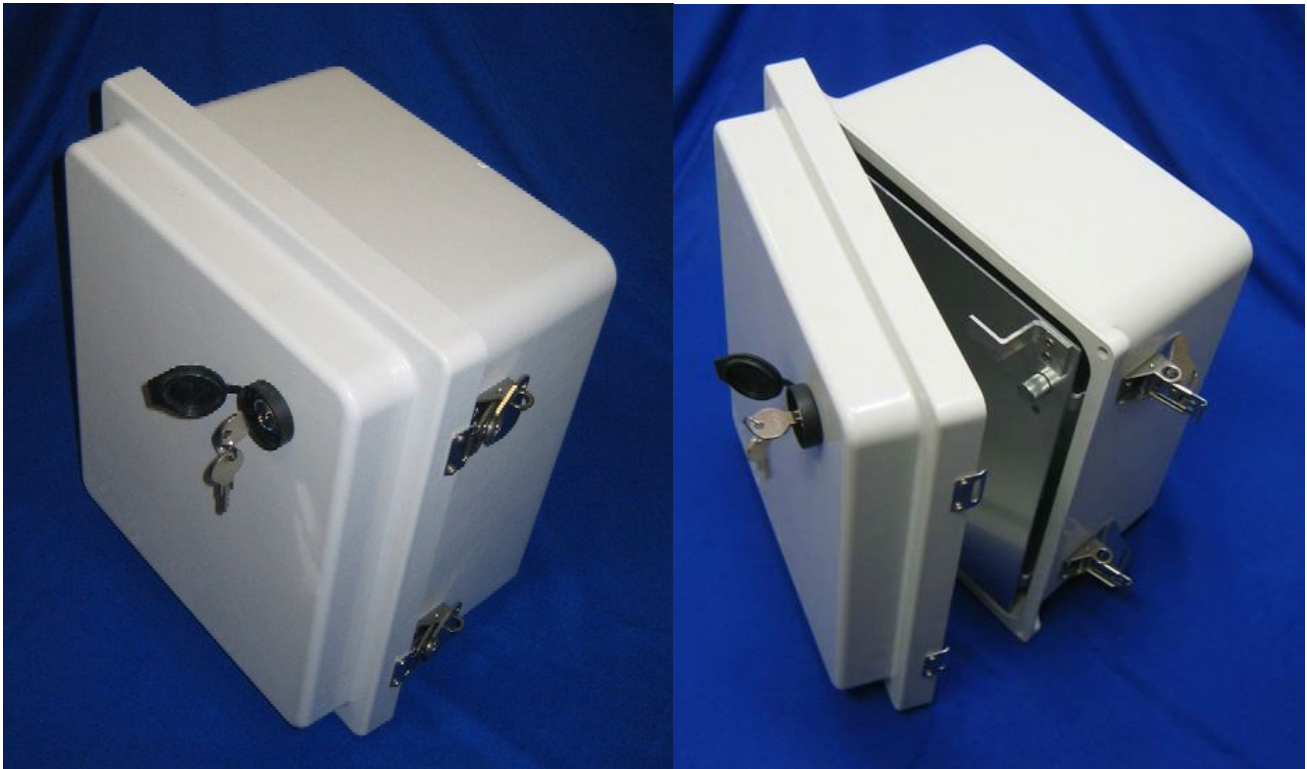




**ALLIED
MOULDED
PRODUCTS, Inc.**

Keylock Assembly for AMR Series Enclosures with Hinged Front Panels
Installation Instructions for Keylock Assembly
AMKEYLOCKRCHFP

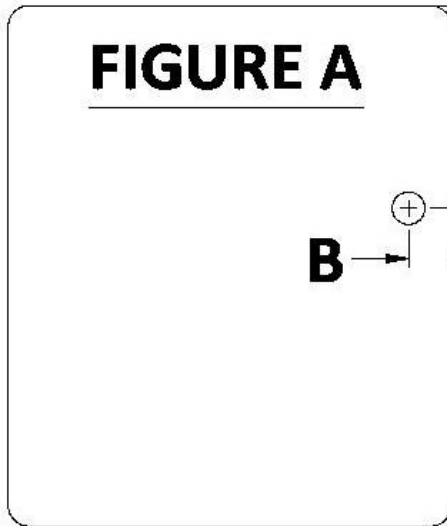
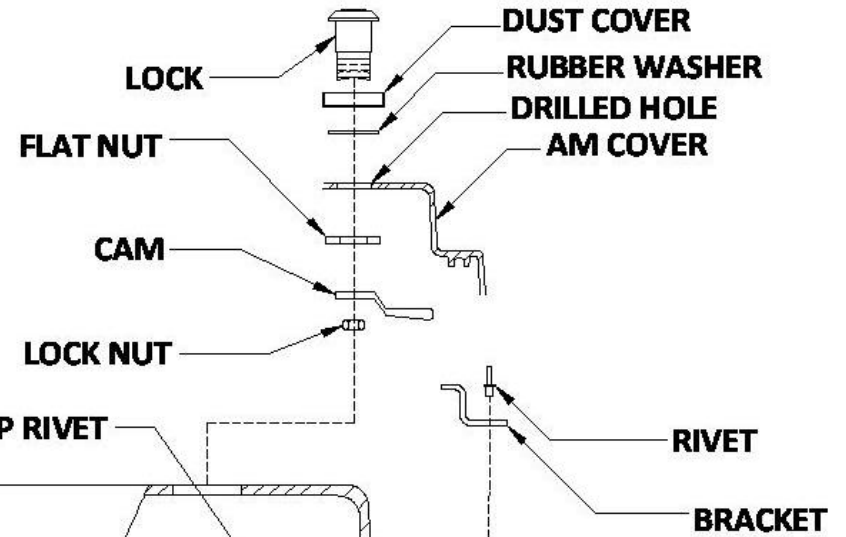
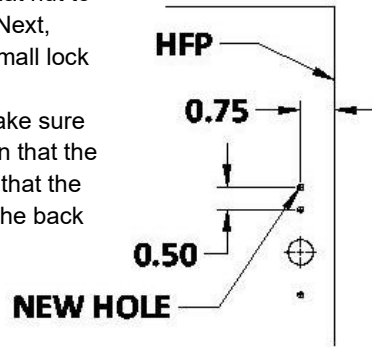


Allied Moulded Products, Inc.
222 North Union Street
Bryan, OH 43506
Phone: 1-800-722-2679 FAX: 1-800-237-7269
www.alliedmoulded.com



1. Drill a 7/8" hole in the cover using a hole saw according to the chart in Figure A.
2. Remove the top rivet of the Hinged Front Panel (HFP) spring latch assembly using a #29 drill bit. Drill a hole using the #29 drill bit in the location according to FIGURE B.
3. Attach the top bracket to the HFP using the rivets in the old hole and new hole.
4. Assemble the lock by placing the dust cap on, followed by the rubber washer and then insert the lock into the hole in the cover. After the lock is in the hole, attach the flat nut to hold the lock in place (finger tighten at this step). Next, install the cam on the back of the lock using the small lock nut to secure it.
5. Close the box, insert the key and turn the lock. Make sure that when the key is turned into the locked position that the cam is under the bracket. Once you have verified that the lock is positioned properly, tighten the flat nut on the back of the lock assembly.

FIGURE B



Part No.	"A"	"B"
AM1084/1086	5 7/8"	3.00"
AM1206	2 7/8"	3.00"
AM1426	3 5/8"	3.00"
AM1648	4 11/16"	3.00"
AM1868	6 3/4"	3.00"
AM2068	5 17/32"	3.00"
AM2420	4 13/16"	3.00"
AM2424	4 13/16"	3.00"
AM3024	5 13/16"	3.00"

